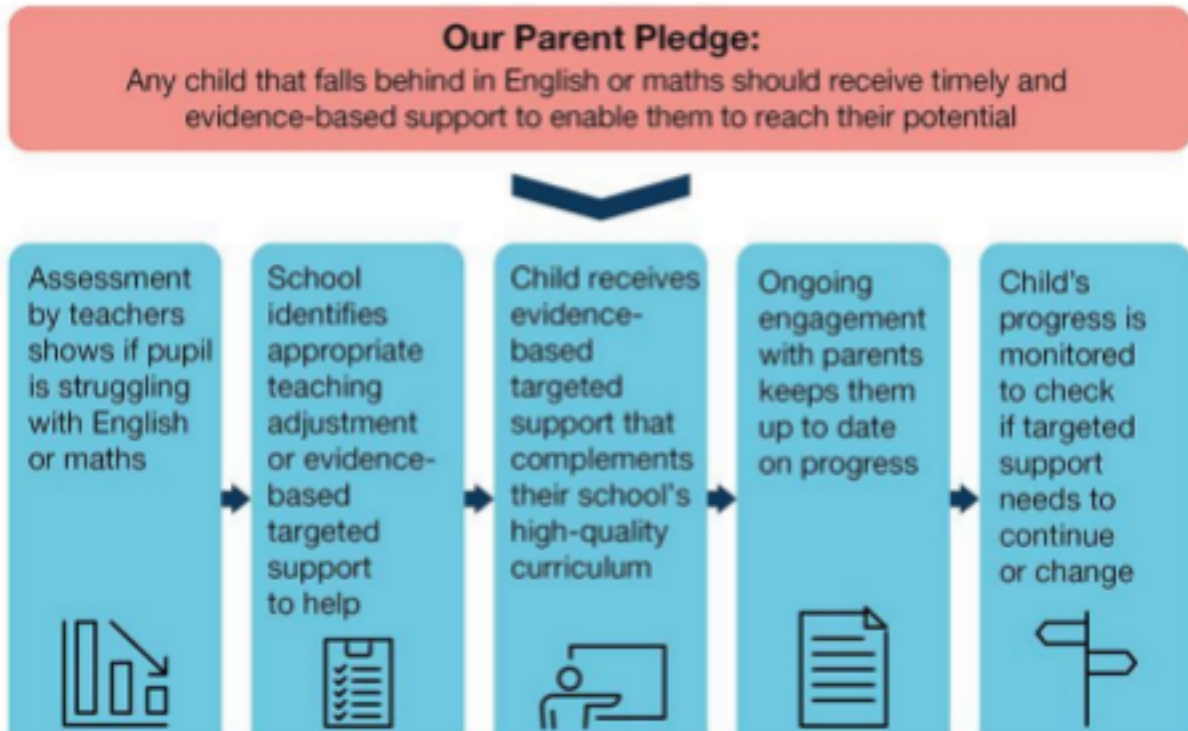


Parents Pledge at Stone Soup Academy

What is the Parent Pledge?

At Stone Soup Academy any student that fails to make expected progress in English



or maths will receive personalised support to enable them to reach their potential. This will be communicated to the student and their parents on a half termly basis (six times a year) via our reporting system

How will these aims be achieved?

1- Ensuring excellent quality of teaching: Qualified teachers, teaching excellent lessons.

2- Additional support: through rigorous assessments, all students who require additional support are quickly identified, including SEND students and they will receive the required support and intervention.

3- Reliable assessment: SSA uses a robust and reliable assessment to identify students who need extra help. We offer targeted support utilising the growing evidence base of effective support approaches including the tutoring programme.

4- SEND review: all students with special educational needs including the students identified but who have not been diagnosed have access to academic support.

5- Tutoring programmes: SSA is using the national tutoring funding to give additional support for students in English and maths.

As a parent, what should you expect?

At Stone Soup Academy all parents are aware of the following:

1- **Assessment:** at SSA we conduct a summative and formative assessment on a termly basis (six times a year). An easy to understand progress report will be shared with parents.

2- **Catch up in English:** *This will support your child to progress across all areas of the curriculum*

3- **Progression into higher education:** as your child reaches the age where they are considering the next steps, potentially into further and higher education. We will drive greater social mobility into both further then higher Education, strengthening the engagement between our school and further and higher education providers. If your child is considering further and higher education, then we will give them detailed support and guidance – not just about the application process, but about the financial implications of the study and their rights to financial support.

4- High Expectations

We have the highest of expectations of our students. We expect all of our students to attend school on time every day, ready to learn and achieve.

Our schools provide safe, focused and happy environments for learning. Outstanding behaviour improves pupils' capacity to learn. We enforce our behaviour policy robustly and consistently across the school. Our student code of conduct sets out the high standards of behaviour that we expect. We are positive when our students behave well but have clear consequences for misbehaviour and zero tolerance for bullying, abusive or discriminatory language and violence. All adults in our school model the positive behaviour we expect of our students. Equally, we expect our parents to reinforce these behaviours at home.

We work hard to create a culture of high aspirations throughout the school. We set ambitious targets for every student. Our aim is that every student should achieve the best possible results for each phase of their learning. Staff, students and parents are involved in the whole process of setting the targets and are expected to take responsibility for them once they are agreed upon.

5- A High-Powered, Knowledge-Based Academic Curriculum

SSA curriculum is broad and balanced, with an emphasis on academic success. Our

curriculum is both coherent and cumulative, with an emphasis on the critical importance of knowledge acquisition. Our curriculum is designed to cultivate well-rounded, intelligent and socially-aware students, but it is also tailored to deliver excellent academic results. Regardless of background or prior ability, we aim to secure the best outcomes for all of our students, ensuring that our curriculum gives a solid foundation for the future learning at every stage.

6- Carefully Focused Teaching, Rigorous Tracking, Personalised Intervention and Accelerated Learning

Our approach to teaching is that a good teacher, with sound subject knowledge, leads the classroom and delivers a focused curriculum. All lessons are intricately planned and take into account models for best practice. Our teaching staff develop innovative and highly successful approaches to sustain students' interest. This enables us to push the boundaries of the possible to achieve the improbable.

We have the highest expectations of every student. Every student at SSA has their progress closely monitored to ensure they are always meeting their – and our – high expectations. After each assessment, targets are set for every student and appropriate interventions and personalised 'catch-up' activities are planned. Targets are regularly reviewed and revised.

We send home progress reports six times a year to ensure that parents are kept abreast of their child's progress and are immediately informed if any issues arise. We meet parents whose child is at risk of not achieving their potential after each progress report. Students are celebrated and rewarded for their successes but, just as importantly, we intervene immediately with a personalised approach if there is a cause for concern.

7- Highly Qualified Staff That Are Motivated, Well-Trained and Using Cutting-Edge Research

We believe that the most effective learning goes hand-in-hand with the most inspirational teaching, which is why our teachers are some of the best. They are highly motivated and benefit from extensive training and continued professional development. This support means they deliver the very best outcomes for students, helping them to realise their potential.